



Abi d'Oru

SARDINIAN BEACH HOTEL & SPA

PORTO ROTONDO



Abi d'Oru Beach Hotel & Spa

- 3 restaurants
- 3 bars
- private beach
- gym
- 2 heated swimming pools
- 2 tennis courts
- private SPA
- parking
- mini club
- nursery
- boutique
- concierge desk

Garden Family Sea Side 418 + 419: Totalmente ristrutturata al piano terra. Si compone di 2 camere comunicanti lato mare ognuna con il suo bagno. Una camera è doppia (25 mq.) con vista mare frontale, l'altra camera è Tripla (30 mq.) e ha una vista mare laterale. In totale unite possono ospitare fino a 5 persone. Si trovano nella parte sinistra anteriore dell'hotel, lato mare, e sono arredate in stile moderno.

Garden Family Sea Side 418 + 419: Totally refurbished, ground floor. It is composed of 2 rooms interconnected with 2 bathrooms. 1 Double room (25 sq.m.) with front sea view and 1 Triple room (30 sq.m.) with lateral sea view. These rooms joint can sleep up to 5 persons in total. They are located on the left-front side of the hotel and are finely furnished in modern style.



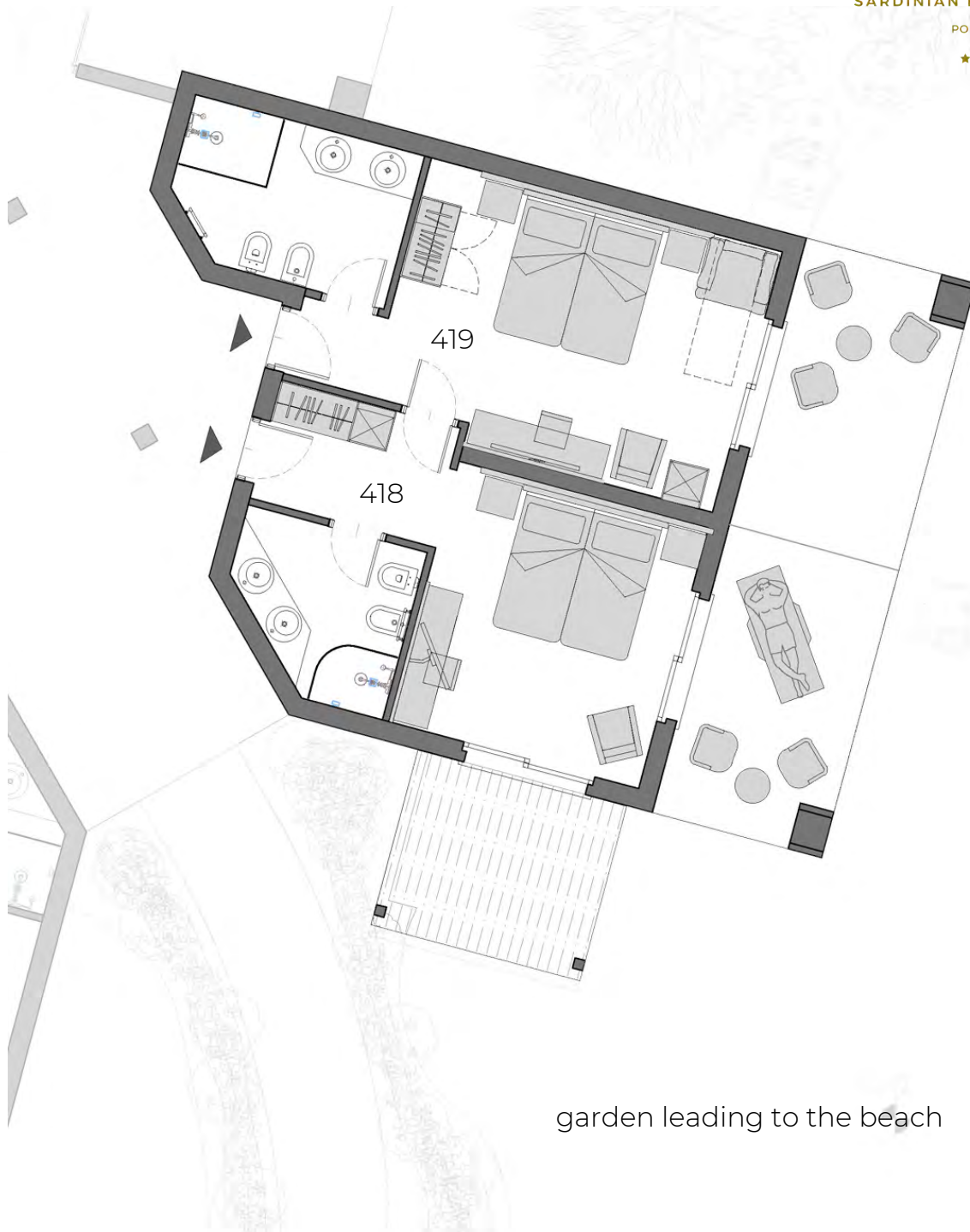
Garden Family Sea-Side 418 +419



Abi d'Oru

SARDINIAN BEACH HOTEL & SPA

PORTO ROTONDO



garden leading to the beach

418: 25 sq.m

419: 30 sq.m

scala 1:100

